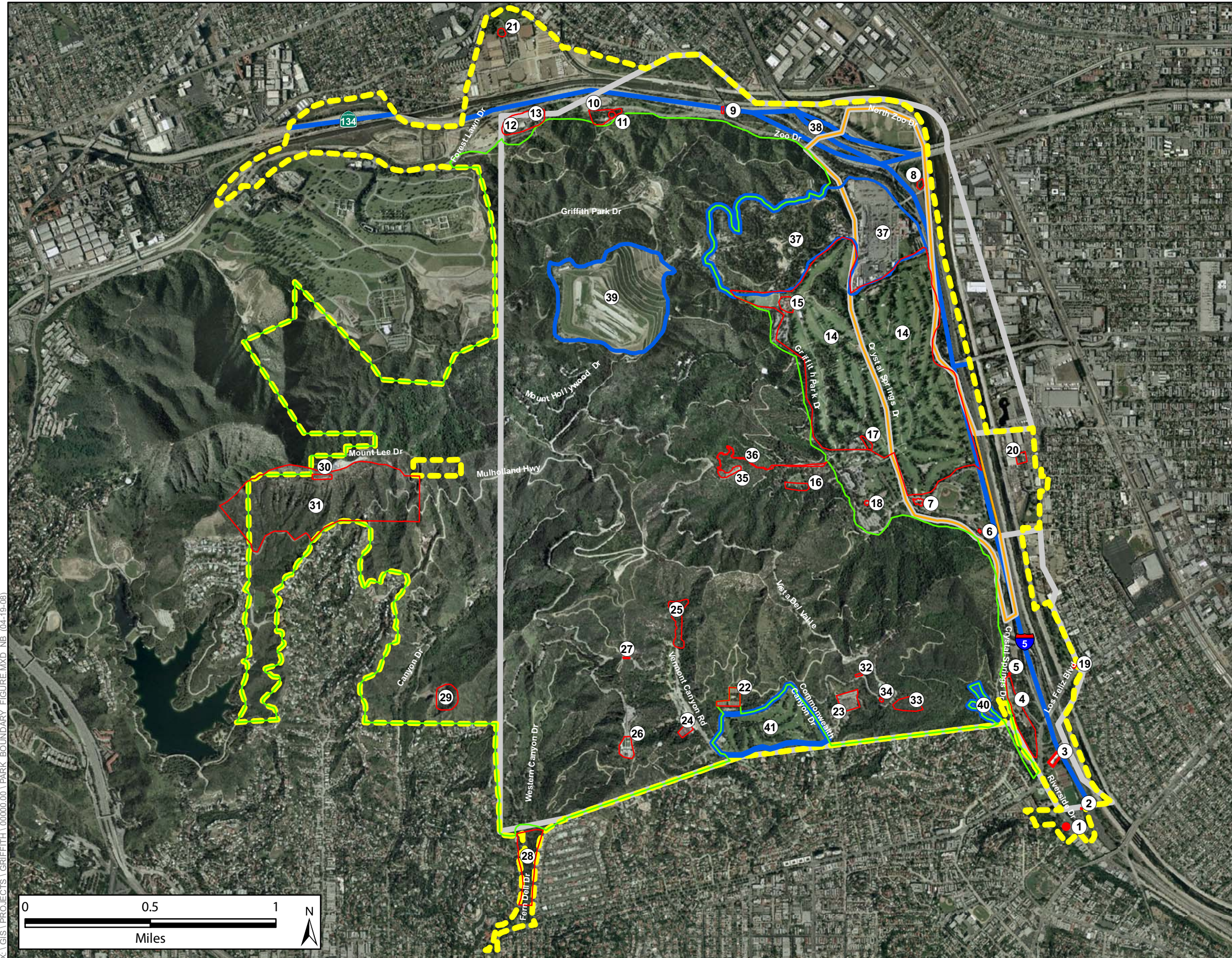


GRIFFITH PARK HISTORIC RESOURCES MAP



- City of Los Angeles Park Boundary (approx.)
- 1897 Park Survey Boundary (approx.)
- Historically Sensitive Resources and Areas
- Non-Contributing or Altered Components
- Wilderness Area
- Griffith Reservation

Historically Sensitive Resources and Areas:

- 1- Former Costume Workshop and Surroundings/ LA Shares Warehouse, 1961
- 2- Ranger House, c.1938
- 3- Municipal Plunge and Associated Buildings, 1927
- 4- Pony Ride, 1947 & Train Ride, 1947, 1963
- 5-1920's era DWP Building (I)
- 6-1920's era DWP Building (II)
- 7- Feliz Adobe, 1853, 1934 (City HCM No. 401)
- 8- Sycamore Grove
- 9- Riverside Drive Bridge, 1938
- 10- L.A. Live Steamers, 1956
- 11- Walt's Barn, 1950
- 12- Travel Town Transportation Museum (Collection), 1952-1962
- 13- "Little Nugget" Railcar, 1937 (City HCM No.474)
- 14- Wilson & Harding Golf Courses, 1923, 1924
- 15- Wilson & Harding Golf Clubhouse, 1937
- 16- Old Zoo Buildings, 1914- c.1937
- 17- Wilson Harding Turf Maintenance Facility, 1927
- 18- Merry-Go-Round, 1926, installed 1937
- 19- Los Feliz Cafe and Signage, 1948, 1956
- 20- Central Service Yard Administration Building, 1958
- 21- Former Cricket House, c.1933
- 22- Vermont Tennis Courts, c.1927
- 23- Nursery and Horticultural Center, 1927
- 24- Greek Theatre, 1930
- 25- Bird Sanctuary, 1922-c.1937
- 26- Griffith Observatory, 1935 (City HCM No.168)
- 27- Mt. Hollywood Tunnel, c.1927
- 28- Fern Dell Nature Area, 1914 -c.1937/ Gabrielino Indian Site (City HCM No.112)
- 29- Bronson Caves, c.1909-1920
- 30- Hollywood Sign, 1923, reconstructed 1978 (City HCM No.111)
- 31- Hollywood Sign Viewshed
- 32- 1930's era Stoppage Dam
- 33- Cedar Grove
- 34- Early Water Tower, c.1927
- 35- Bee Rock
- 36- Bee Rock Trail, 1903

The Wilderness Area is a Historically Sensitive Resource

Non-Contributing or Altered Components:

- 37- Los Angeles Zoo and Autry National Center, 1966, 1987
- 38- Freeways and All Associated Ramps, 1957
- 39- Toyon Landfill/ Reclamation Project, 1958
- 40- Marty Tregnan Golf Academy, 2000
- 41- Roosevelt Municipal Golf Course, 1966

